

Le code html dissimule ce lien caché avec un autre lien vers :

<https://www.charteronebank.com/general/custdetailsconfirmation.asp>

En fait le lien suivi sera piloté par la balise MAP :

<http://emodule05.com:880>

L'analyse de l'IP utilisée avec Whois aboutit à un site hébergé en Iran :

```
inetnum: 217.219.163.0 - 217.219.163.255
netname: MMSU_SARI
descr: Mazandaran Medical Science University
country: IR
admin-c: FR260-RIPE
tech-c: FR260-RIPE
status: ASSIGNED PA
mnt-by: AS12880-MNT
source: RIPE # Filtered

person: Farrokh Rahimzadeh
address: Sari-Mazandran-Moalem Square
address: Moalem Square -Pajooheshi Moavenat
phone: +98 151 3241906
fax-no: +98 151 3257231
e-mail: MMSU_Sari@yashoo.com
e-mail: alaeddink@yahoo.com
nic-hdl: FR260-RIPE
source: RIPE # Filtered

% Information related to '217.218.0.0/15AS12880'

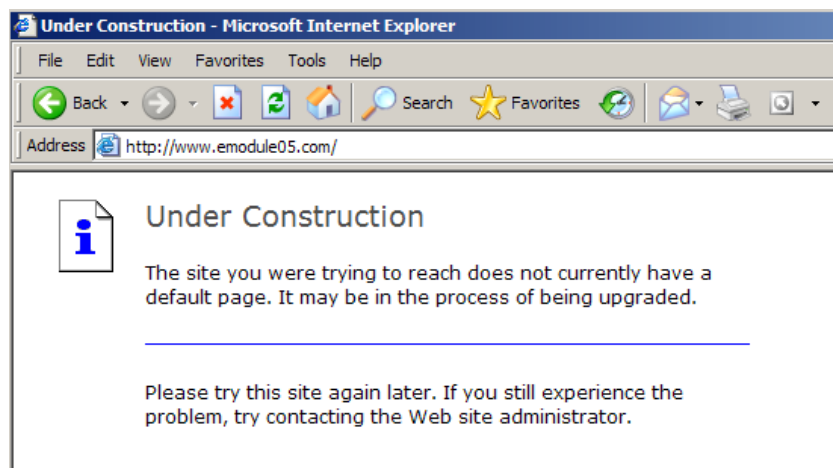
route: 217.218.0.0/15
descr: DCI-Route
origin: AS12880
mnt-by: AS12880-MNT
source: RIPE # Filtere
```

Il est à noter que le domaine www.emodule05.com a bien été déposé en Angleterre pour compliquer l'analyse (ici, l'accès est <http://emodule05.com:880> et non www.emodule05.com):

Domain Name : emodule05.com

::Registrant::

Name : James ...
Address : ..., Nottingham
Zipcode : NG16 3AD
Nation : UK



3. Un cas de phishing redoutable car peu visible :

L'usage de la balise MAP couplée au lien html et d'un nom de domaine « détourné » compliquent réellement la détection « au premier regard ».

Les observations habituelles permettent de reconnaître la fraude :

- URL ne correspondant pas à une source Charter One
- Demande des identifiants de la carte à débiter dès la première page,
- Absence de clé SSL (icône zone sécurisée) pour un site HTTPS affiché.

File Edit View Favorites Tools Help

Back Forward Stop Refresh Home Search Favorites

Address <http://emodule05.com:880/> ???

<https://www.charteronebank.com/general/custdetailsconfirmation.asp>

Terms of Use | Open an Account | Apply for a Personal Loan | Apply for a Mortgage

CHARTER ONE BANK

CHARTER ONE BANKING

Charter One Banking Customer Details Confirmation!

First and Last Name:

ATM/Debit Card: ???

PIN: ???

Expiration Date:

User ID: [Not Already Enrolled?](#)

Password: [Forgot Your Password?](#)

E-mail Address:

[Confirm](#) [Cancel](#)

Related Links

- [Online Banking Test Drive](#)
- [Online Banking FAQ](#)
- [Maintenance Schedule](#)
- [Online Satisfaction Survey](#)
- [Customer Service](#)
- [Charter One Home](#)
- [Security and Privacy](#)
- [Help with this Page](#)

Online Banking is best viewed on Windows 98 or higher with Microsoft Internet Explorer 5.5 or higher, Netscape 7.0 or higher, and AOL 7.0 or higher; on Macintosh OS 9.0 or higher with Microsoft Internet Explorer 5.1 or higher, Netscape 7.0 or higher, and AOL for OSX. Although, other browser versions may be able to be used successfully, we recommend upgrading your browser if you are using an earlier version than specified. The [Software Download Center](#) provides access to links to sites providing online upgrades. [Click here](#) for more information regarding the browsers supported and required system settings.

4. Malheur au distrait :

Après avoir fourni les informations demandées, le distrait obtient un écran de confirmation dont le lien « Exit » renvoie au site www.charteronebank.com :

CharterOne Banking - Exit Page - Microsoft Internet Explorer

File Edit View Favorites Tools Help

Back Forward Stop Home Search Favorites Refresh Print Mail Stop

Address <http://emodule05.com:880/exit.htm>

https://www.charteronebank.com/general/custdetailsconfirmation_exit.asp
Terms of Use | Open an Account | Apply for a Personal Loan | Apply for a Mortgage

CHARTER ONE BANK

CHARTER ONE BANKING

Charter One Banking Customer Details Confirmation!

Thank you for confirmation. Now you can exit from this page.

[Exit](#)

Online Banking is best viewed on Windows 98 or higher with Microsoft Internet Explorer 5.5 or higher, Netscape 7.0 or higher, and AOL 7.0 or higher; on Macintosh OS 9.0 or higher with Microsoft Internet Explorer 5.1 or higher, Netscape 7.0 or higher, and AOL for OSX. Although, other browser versions may be able to be used successfully, we recommend upgrading your browser if you are using an earlier version than specified. The [Software Download Center](#) provides access to links to sites providing online upgrades. [Click here](#) for more information regarding the browsers supported and required system settings.

Related Links

- [Online Banking Test Drive](#)
- [Online Banking FAQ](#)
- [Maintenance Schedule](#)
- [Online Satisfaction Survey](#)
- [Customer Service](#)
- [Charter One Home](#)
- [Security and Privacy](#)
- [Help with this Page](#)

Member FDIC | Equal Housing Lender | © 2005 Charter One Bank

Retour donc au site bancaire via « Exit » :

Charter One Bank - Microsoft Internet Explorer

File Edit View Favorites Tools Help

Back Forward Stop Home Search Favorites Refresh Print Mail Stop

Address <http://www.charteronebank.com/home/>

Office Locator | Careers | Investor Relations | Calculators & Tools

CHARTER ONE BANK

Home | Personal Finance | Small Business | Commercial | En Español | Customer Service

Rated one of the top 10 bank Internet sites by Gomez. 2ND QUARTER 2004 SCORECARD MERGER INFORMATION CENTER

Online Banking Login

Personal Finance
 Small Business
 Cash Management


User ID:
 Password:
[Forgot Password?](#)

Remember my User ID

If you want to enroll in Online Banking, choose below:

- Personal [Enroll](#) | [Demo](#)
- Small Business [Enroll](#) | [Demo](#)
- Commercial [Enroll](#) | [Demo](#)

[Security and Privacy](#)



The Charter One \$100,000 Home Makeover Giveaway

Home improvement made easy. Apply for a home equity line of credit and enter to win.

[LEARN MORE >>](#)

Open an Account
 Apply for a Loan

Special Offers

Enroll today and Reward Yourself!
 A Caribbean vacation! Cool digital camera! Your own planet!
[Learn More](#)

Make-A-Difference Gold Debit MasterCard
 Choose a card and a percentage of your purchase will be donated to your charity.
[Learn More](#)

Coming Soon!
 A Change is Coming! Exciting things are happening at Charter One!
[Learn More](#)

Personal Products	Mortgage Loans	Business Products
Personal Deposits		
OUR TOP RATES	APY*	INTEREST RATE**
Circle Money Market	3.00%	2.96%
4 Mo. Cyber CD	3.25%	3.20%
18 Mo. Cyber CD	3.75%	3.70%
Personal Deposit product terms and conditions. Rates are subject to change at any time.		
Consumer Loans		
OUR TOP RATES	APR*	
89.99% LTV HELOC	4.99% (Prime - 1.01%)	
99.99% LTV HELOC	7.75% (Prime + 1.75%)	
5-Year Home Equity Loan	5.49%	
Consumer Loan product terms and conditions. Rates are subject to change at any time.		

Special Notice

Ensuring the privacy and protection of your personal information is of utmost importance to Charter One Bank. We will never email you to request personal account information over the internet or any other means. Help protect yourself against online fraud - if you suspect that an unsolicited email is fraudulent, please call our customer service hotline at 1-877-981-FREE. [Click here for more information.](#)

As of 5/13/2005.
 All accounts are FDIC Insured. [Review Account Rules and Regulations Handbook](#) for statement of fees.
 * Annual Percentage Yield (APY)
 ** The annual percentage rate (APR) may vary.

Contact Us | Privacy Policy | Software Downloads | Site Map | Member FDIC | Equal Housing Lender | © 2005 Charter One Bank

5. Actions engagées

- La publication de ce document,
- Ce cas a été reporté au niveau « .org »